

*New!*

# BADGER

## ALUMINUM ALL-PURPOSE TRUCK BODIES



*Above: Optional underbody toolbox shown. Right: Optional above body and underbody toolboxes shown.*



The attractive all aluminum "Badger" bodies are lightweight yet rugged enough to withstand your demanding day-in and day-out use.

- For 1/2, 3/4 or 1-ton chassis
- Rust-proof • Minimal maintenance
- Increased fuel mileage
- Ideal for gooseneck hauling
- 3-year limited warranty

### ALUMINUM "BADGER" FEATURES

#### All Aluminum Construction:

- 1/8" (.125) thick treadbrite floor, side rails, and reinforced rear apron.
- 3" channel crossmembers.
- 4" channel long members (6" optional) gusseted to cross members.
- Heavy-duty tapered bulkhead welded and gusseted to platform.
- Stake pockets on side rails sized to accept 2x4 boards.
- 1/4" x 2" banding rails to secure cargo.

#### Lighting:

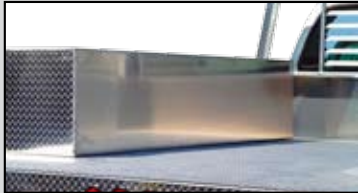
- FMVSS compliant reflectorized corner clearance lights, 3-light cluster (I.D. lights) and tail, turn, stop and backup lights.
- Light wiring in loom harness.

MODEL	LENGTH	WIDTH	C.A.	APPROXIMATE WEIGHT
AB8N	8'	82"	54"-60"	340 lbs.
AB8W	8'	96"	60"	360 lbs.
AB9N	9'	82"	60"	440 lbs.
AB9W	9'	96"	60"	459 lbs.
AB10N	10'	96"	84"	510 lbs.
AB11W	11'	96"	84"	561 lbs.
AB12W	12'	96"	84"	612 lbs.

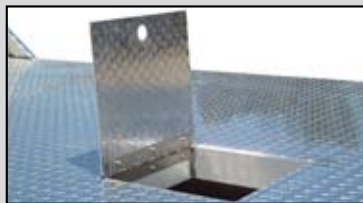
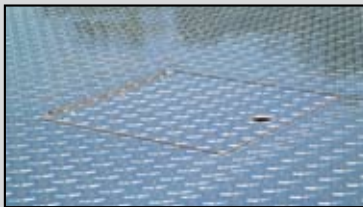
Omaha Standard reserves the right to modify, change or revise published specifications and furnish products so altered without prior notice.

# BADGER ALUMINUM ALL-PURPOSE TRUCK BODIES

## OPTIONS



- Omaha "Strongbox" above body aluminum toolboxes.



- Flushmounted hinged gooseneck door.

Omaha Standard reserves the right to modify, change or revise published specifications and furnish products so altered without prior notice.



- Omaha "Strongbox" underbody aluminum toolboxes.

### Other Options:

- Rearstake pockets and banding rail.
- 12" aluminum drop-in contractor racks - sides and rear. Requires optional rear stake pockets.
- 6" channel long members.



3501 South 11th Street ■ Council Bluffs, Iowa 51501 U.S.A.  
 Phone 712-328-7444 ■ 800-279-2201 ■ FAX 800-568-7444  
 www.omahastd.com ■ e-mail: os@omahastd.com

In the interest of product improvement, Omaha Standard Inc. reserves the right to modify, change or revise design and specifications and furnish product so altered without prior notice.

ABAPB 04-06

SOLD BY:

OR SEE YOUR FAVORITE TRUCK DEALER